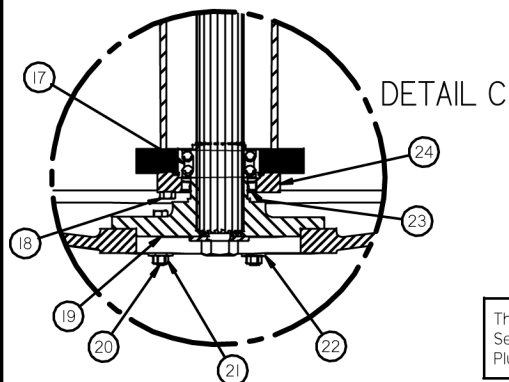
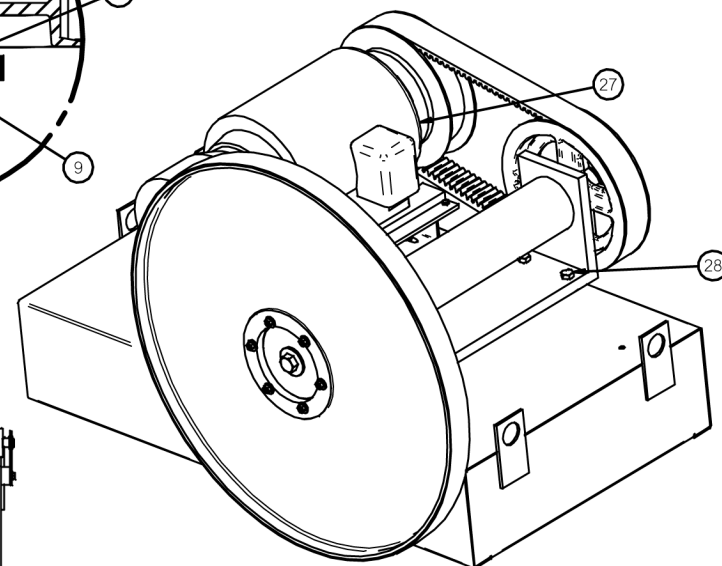
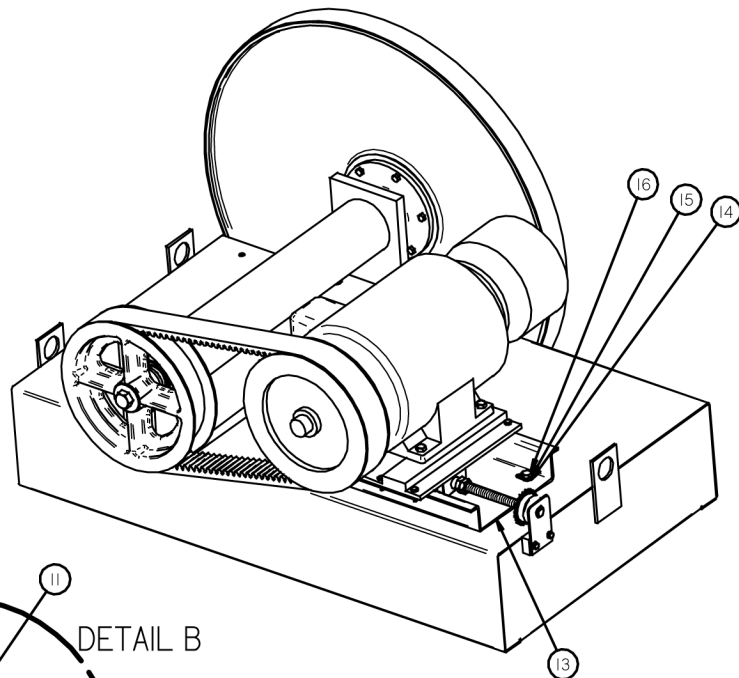
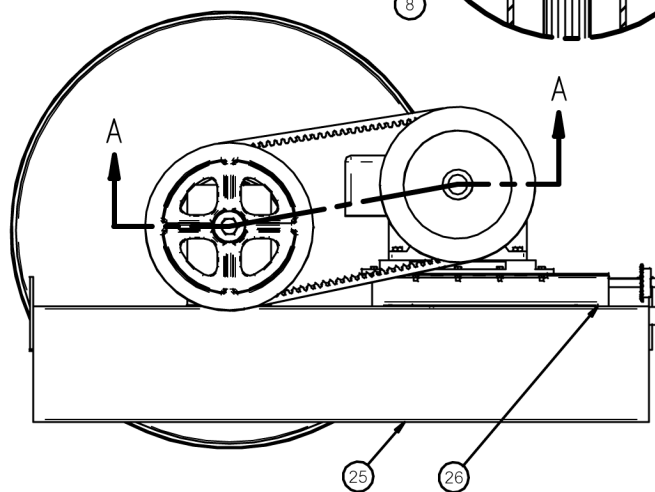
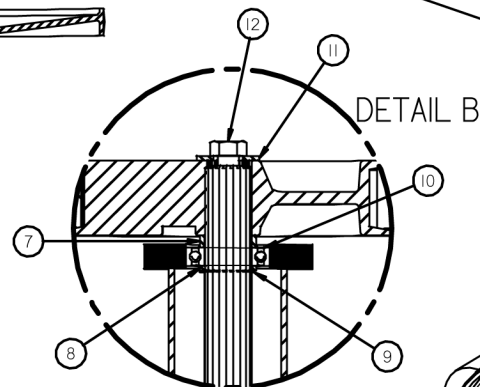
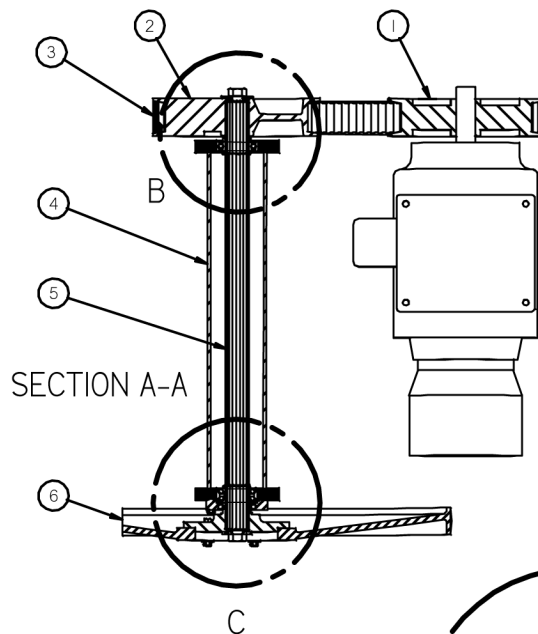


Item Number	Document Number	Title	Quantity
1		TB Woods Companion Sheave	1
2	HS-888-B	Drive Pulley	1
3	4430V790	Vari-Speed Belt	1
4	HS-943-C	Single Speed Bracket	1
5	HS-942-A	Single Speed Shaft	1
6	HS-291-I-C	Saw Pulley	1
7	HS-925-A	1/2" Gear Spacer	1
8	15323-A	Bearing Spacer	2
9	5100-196	External Retaining Ring	2
10	6210-2RS	Bearing	1
11	15311-A	Clamp Washer	2
12	7/8-9 x 1 1/4	Hex Bolt	2
13	HS-1078-C	Motor Slide Assembly	1
14		1/2x7/8 Flat Washer	4
15		1/2 Lock Washer	4
16	1/2-13 x 1 1/4	Hex Head Cap Screw	8
17	5210-NR-2RS	Bearing	1
18	3/8-16 x 1 3/4	Hex Head Cap Screw	4
19	HS-825-A	Saw Pulley Hub	1
20	3/8-16 x 2	Hex Bolt	6
21		3/8-16 Hex Nut	6
22		3/8 Flat Washer	6
23	471271	National Oil Seal	1
24	HS-917-A	Saw Pulley Bearing Clamp	1
25	HS-963-D	Concrete Base	1
26		1/2x1 3/4 Flat Washer	8
27		15HP Baldor Electric Motor	1
28	5/8-11 x 2	Hex Head Cap Screw	4



This Drawing Supersedes HS-945-C, Utilizing Sealed Bearings and Omitting the Grease Plugs and Holes.

Use Sealed Bearings When Replacing Bearings in ALL Units

GROB INC. GRAFTON, WIS.

Single Speed Unit Assembly
for 6V-36 Band Saw

One				DRN KS	TR	CH	DATE 10-9-03	SCALE 1:8	OK Rev I	HS-945-I-C
NO. REQ'D	PATT. NO.	MATERIAL	HEAT TREATMENT							